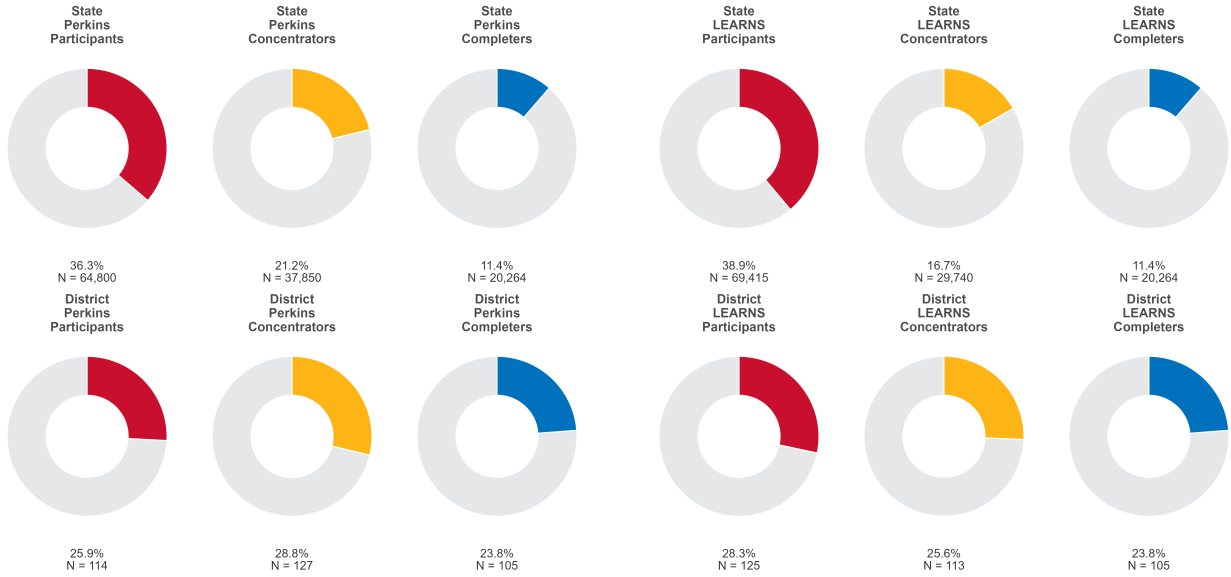




# 2025 CTE SUMMARY REPORT

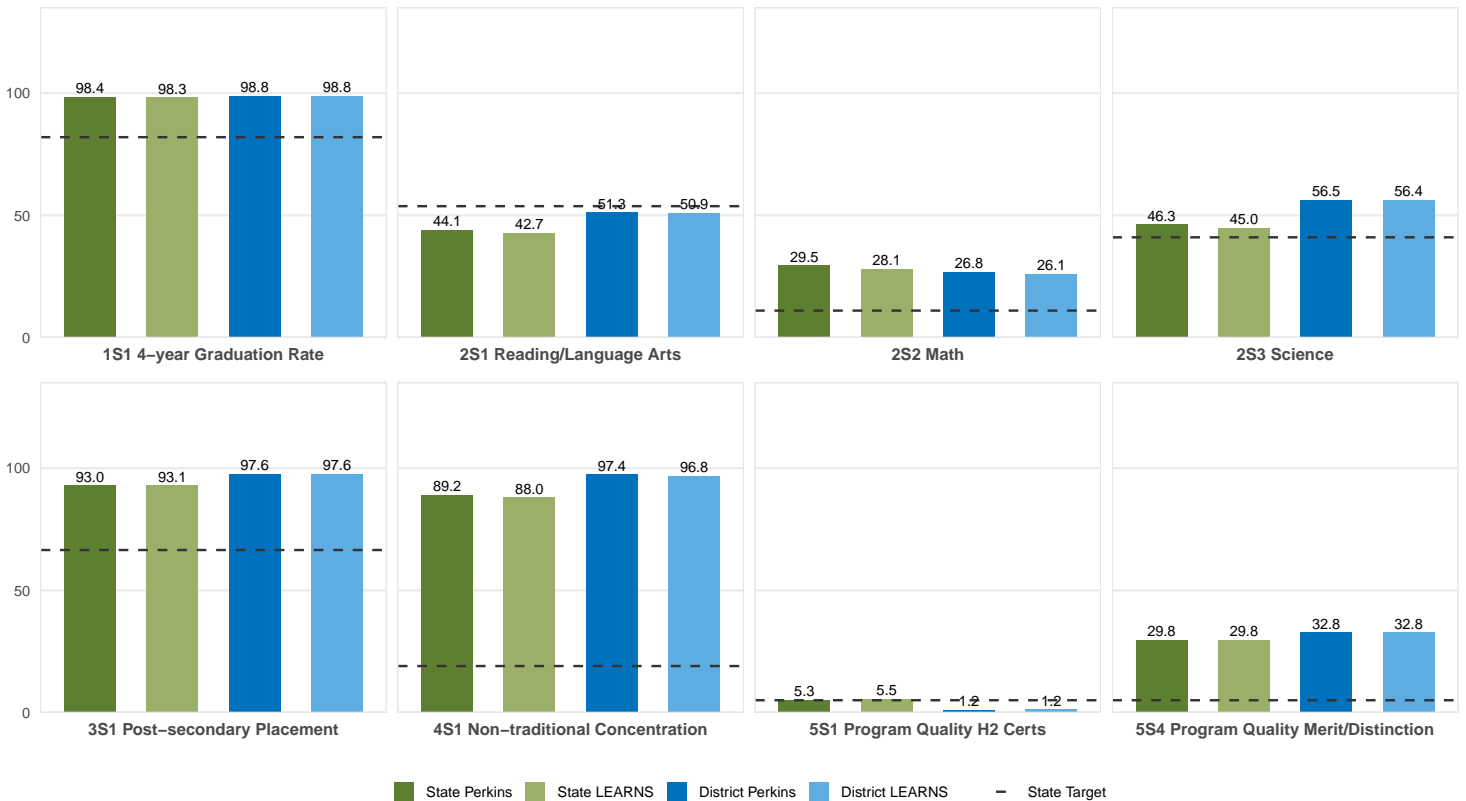
## EMERSON-TAYLOR-BRADLEY SCHOOL DISTRICT



Enrollment includes Grades 8–12 students.

### PERFORMANCE SCORES RELATIVE TO TARGETS

#### CTE Concentrators



A [comprehensive program report](#) is available for more detailed information on all performance measures.